

Smart Desktop Terminal

SUNMI D3 PRO

Your essential desktop to grow business.

Powered by
SUNMI OS

Compatible with
SUNMI DMP

Minimalist and durable, as all 3rd Gen SUNMI Terminals are.

With a 15.6" thin-bezel FHD screen in the aluminum body, and the deliberately trimmed stand and base, D3 PRO offers you a neat way to manage cables and also presents a durable yet stylish appearance.

More powerful, not just in performance.

D3 PRO, coming with a Qualcomm platform, 4GB RAM + 64GB ROM memory, and fingerprint login for SUNMI One ID service, definitely will offer you improved user experience.

SUNMI OS 4.0 born for business, better in experience.

Enjoy one-touch convenience with integrated account and touch ID. Deploy remotely and launch immediately.



Extendable modules designed for your growing business.



15.6" thin-bezel
FHD screen

Cables
Concealed



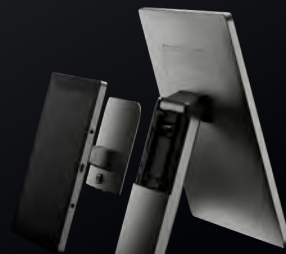
Qualcomm platform



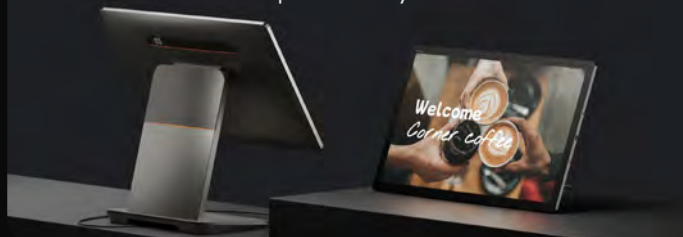
10" customer display
(Option with NFC Tap
on Glass to support



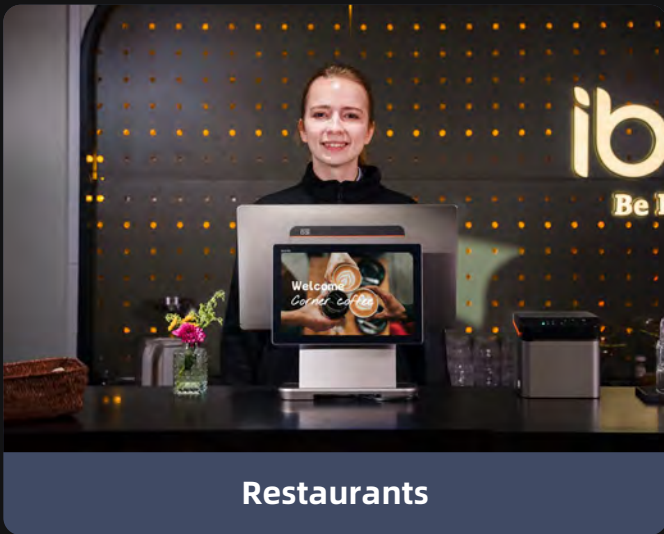
Plug-and-play,
no assembly required.



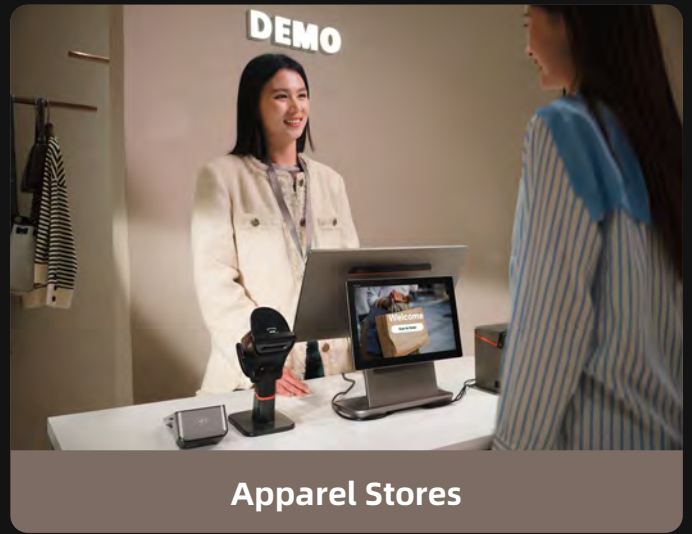
Connect a secondary display with a USB cable and offer
the best interaction experience to your customers.



SUNMI D3 PRO Application Scenario



Restaurants



Apparel Stores

SUNMI D3 PRO Tech Specs

General Configuration

<p>Product Model F3510</p>	<p>OS SUNMI OS (based on Android 13)</p>	<p>Processor Qualcomm hexa-core, up to 2.4GHz</p>	<p>Memory 4GB RAM+64GB ROM</p>	<p>Display 15.6" FHD 1920*1080, 10-point capacitive touch screen</p>
<p>Speaker 1*3W</p>	<p>Network LAN 1000M</p>	<p>Wi-Fi 2.4GHz & 5GHz IEEE 802.11 a/b/g/n/ac supported</p>	<p>Bluetooth BT 5.0 BLE supported</p>	<p>Button 1*Power button (Lock screen; Fingerprint recognition optional)</p>
<p>Power Adapter Input: AC 100~240V/1.5A Output: DC 24V/1.5A/36W</p>	<p>External Memory 1*MicroSD (TF card) Up to 1TB supported</p>	<p>Ports 1*USB typeA 3.0 port 2*USB typeA 2.0 port 1*RJ11 serial port 1*RJ12 cash drawer port 1*RJ45 LAN port 1*audio jack 1*power port 1*USB typeC 2.0 port 1*MicroUSB debug port</p>	<p>Weight D3 PRO: 4.5kg 10.1" separate monitor: 0.88kg</p>	<p>Environment Operating temperature: 0°C~40°C Storage temperature: -20°C~60°C</p>
<p>Indicator Light Blue (Power)</p>	<p>Accessories 10.1" separate monitor, HD 1280*800 (NFC Tap on Glass optional)</p>	<p>Dimensions (L*W*H) 380mm*195mm*310mm</p>		