

FUTURE **LED**

Micro Flip-Chip Common-Cathode COB GREEN SERIES



Contact Person

Susanne Martini - Concept International GmbH

✉ Email: s.martini@concept.biz

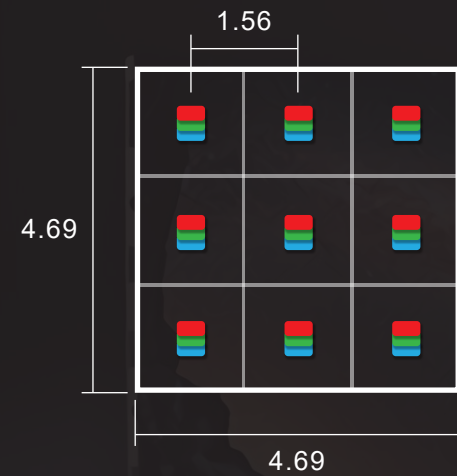
☎ Tel: +49 (89) 961 60 85-26

🌐 Link: https://www.concept.biz/product_categories/led-videowall

Supports Multiple Specifications

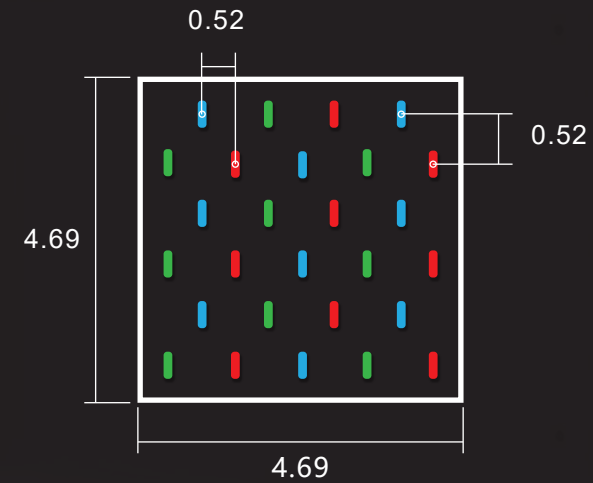
PH0.2 / PH0.3 / PH0.4 / PH0.5 / PH0.6 / PH0.7 / PH0.8 / PH0.9 / PH1.0 / PH1.2 / PH1.5

Industry Conventional Design



27 LED Beads 9 Pixels
PH1.5625mm

Future LED Patented Technology Design
(Spatial Pixel Technology)



27 LED Beads 81 Pixels
PH0.52mm

Product Dimension

Cabinet | 42A : 480mmx270mmx28mm
Size | 63J : 600mmx337.5mmx28mm



Bigger Size

Module | 42A : 120mmx135mm
Size | 63J : 150mmx168.75mm



Future LED Display (four times bigger than others)

Others (small size tile)

- Seamless Splicing
- Good Heat Dissipation
- Excellent Flatness
- Low Temp Rise
- Long Lifetime
- Fanless Design
- Noise-Free
- Automatic Alarm
- Low Failure Rate
- User Safety

Ultra Thin (28mm) & Light

Cabinet Size: 480 × 270 mm

Weight: 3.11 kg

Cabinet Size: 600 × 337.5 mm

Weight: 4.69 kg



Flip Chip COB Unique Design

Ultra-high consistency with the most advanced Flip chip Micro LED, more than 30% energy saving at the same brightness, and the temperature rise of the screen is extremely low.

High stability and reliability, anti-collision, moisture-proof, dust-proof Seamless, no optical stitching, extremely visual experience 100% front maintenance, hot plugging.



High Refresh Rate

High refresh up to 3840Hz maintains high quality display performance when shooting with a professional camera.



COB Display (High Refresh)



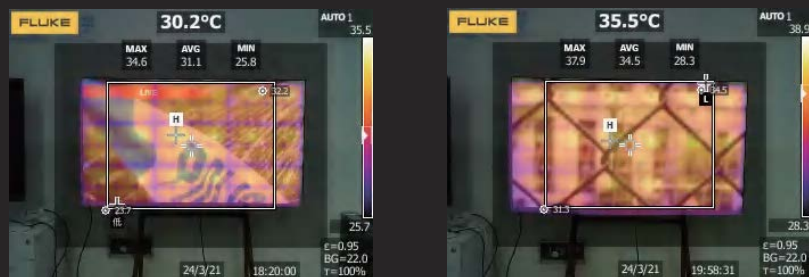
Tradition LED Display (Low Refresh)



Wall
Mounting

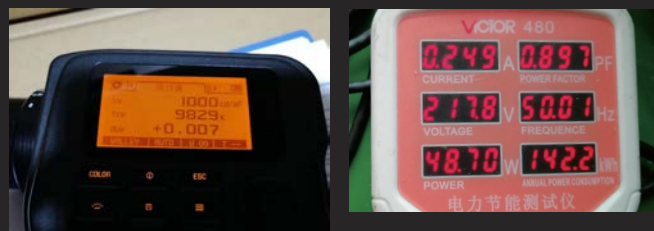
68 mm for wall mounting 100% front service

Excellent Power Saving Ultra Low Temperature Rise



Start Temperature

Temperature After 60 Mins



Only 49W / 480x270mm P1.25 COB panel @ 1000 nits

High Grayscale Technology (Patented Technology)

By Control system algorithm processing 22bits+, screen can reach as high as 20bits performance quality



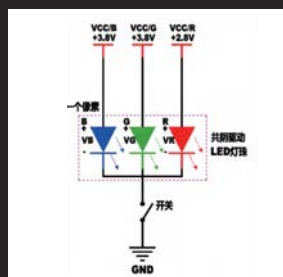
Before



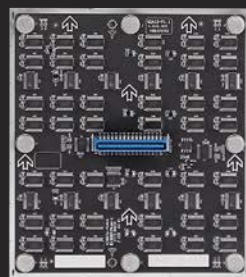
After

Energy Conservation Safety Low Radiation, Anti Blue Light

Common-cathode technology can effectively reduce the energy consumption and heat of the screen, which help prolong the screen service life.



Schematic Diagram Of
Common
Cathode Principle Circuit



Back of Module



Front of Module



Interior Structure

Ultra High Contrast Ratio 100000 : 1

The greater the contrast, the clearer the image, and the brighter the color
Super high contrast supports all levels of colors, which can easily display
vivid and rich colors



0.001 nit ~ 1000 nits



Contrast 100000:1

Contrast 10000:1

Certificates



CCC Certificate

Certified by CCC, FCC, CE-EMC (Class-B), ROHS and TEST REPORT blue light detection standard, low radiation, blue light protection, NO damage for eyes in low brightness environment for a long time.



FCC Certificate



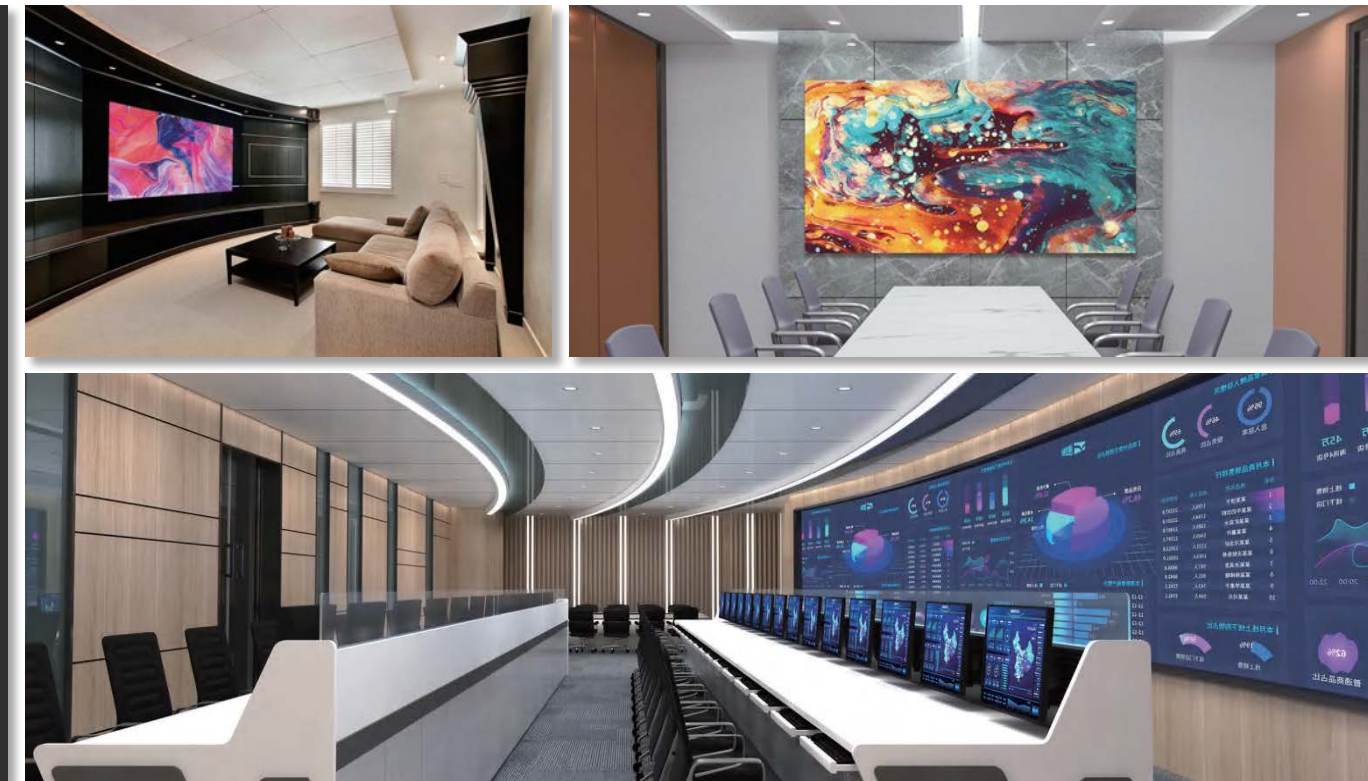
CE-EMC Certificate



ROHS Certificate

Applications

- Home Theater
- Smart Cities
- Education Conferences
- Radio and TV
- Bank Finance
- Security Emergency Command
- Military Aviation Command Center, etc.



Specification

Green Series 42A

Part Number	BSU42A07	BSU42A10	BSU42A12	BSU42A15
Pixel Pitch(mm)	0.75	1.0	1.25	1.50
Cabinet Resolution	640 × 360	480 × 270	384 × 216	320 × 180
Brightness (Colour temperature 6500K)	Factory delivery standard: 1000nits			
Pixel Density(pixels/sqm)	1,777,778	1,000,000	640,000	444,444
Cabinet Dimension(mm)	480mm×270mm×28mm			
Cabinet Weight	3.11Kg/Panel , 24Kg/sqm			
Refresh Rate	3840Hz			
Flatness between modules	≤0.1mm			
LED Chip	Flip Chip COB			
Maximum Contrast	≥1000000:1, Ultra high contrast ratio			
Gray Scale (Bit)	18-20Bits (Control system algorithm processing)			
Peak power	≤500W/ m²@800nits	≤400W/ m²@800nits	≤380W/ m²@800nits	
Average power	150~250W/ m²			

The parameter index will change according to the specific situation of the project (the product shall be subject to the submitted contract specification)

Green Series 63J

Part Number	BSU63J07	BSU63J09	BSU63J12	BSU63J15
Pixel Pitch(mm)	0.78125	0.9375	1.25	1.5625
Cabinet Resolution	768 × 432	640 × 360	480 × 270	384 × 216
Brightness (Colour temperature 6500K)	Factory delivery standard: 1000nits			
Pixel Density(pixels/sqm)	1,638,400	1,137,778	640,000	409,600
Cabinet Dimension(mm)	600mm×337.5mm×28mm			
Cabinet Weight	4.69Kg/Panel , 23.16Kg/sqm			
Refresh Rate	3840Hz			
Flatness between modules	≤0.1mm			
LED Chip	Flip Chip COB			
Maximum Contrast	≥1000000:1, Ultra high contrast ratio			
Gray Scale (Bit)	18-20Bits (Control system algorithm processing)			
Peak power	≤500W/ m²@800nits	≤400W/ m²@800nits	≤380W/ m²@800nits	
Average power	150~250W/ m²			

The parameter index will change according to the specific situation of the project (the product shall be subject to the submitted contract specification)