

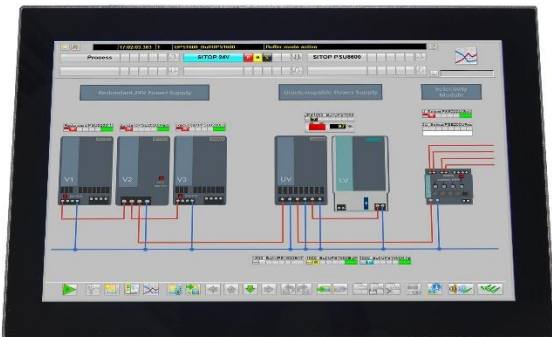
PPC I-Series: 10.1" - 31.5"

INDUSTRIAL PANEL PC 15,6"

8. & 10. Intel Gen.

Product Features

- 10.1" – 31.5" LED Touch up to 1500 cd/m²
- Intel Celeron / Core i3 / i5 (8. & 10. Gen.)
- 4 - 64GB RAM
- 2x LAN, 2x COM-Port RS232/422/485 (selectable)
- 8KV Static Electricity & 600W TVS Surge Protection
- wide range input voltage: DC 9V~36V
- extended operating temperature: -20°C ~ 70°C
- IP66 compliant Front Panel
- stable aluminum housing (fanless)



IP66 Protection



TPM 2.0



-20°C~70°C



7/24 Working



OVP / OCP / RPP



Anti-static
8KV~15KV



Wide Voltage
9V-36V

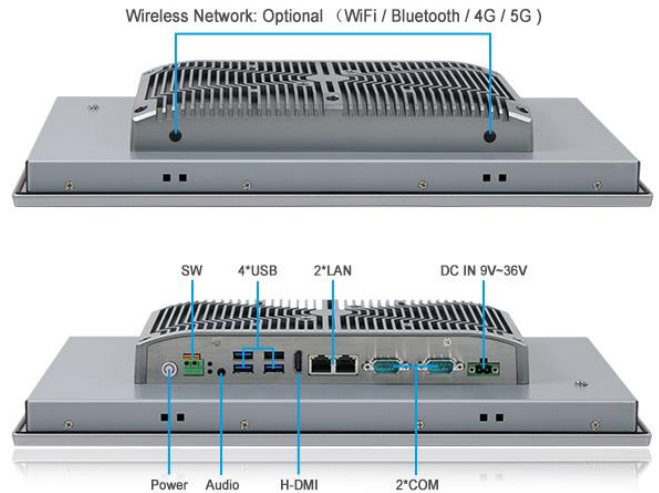
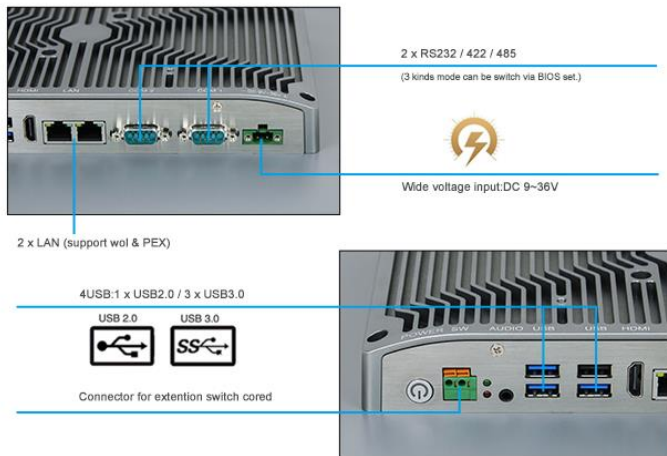


Low Power
Consumption

other available display sizes

Display Size	Resolution	Format	Brightness (cd/m ²)
10.1"	1280x800	16:10	400
10.4"	800x600 (optional 1024x768)	4:3	350
12.1"	800x600 (optional 1024x768)	4:3	500
12.1"	1280x800	16:10	400
13.3"	1920x1080	16:9	400
15"	1024x768	4:3	350
15.6"	1920x1080	16:9	450
17"	1280x1024	5:4	400
17.3"	1920x1080	16:9	400
19"	1280x1024	5:4	450
21.5"	1920x1080	16:9	400
23.8"	1920x1080	16:9	350
31.5"	1920x1080	16:9	300

FUTURE PPC



Power & Enviroment (PPCI-156)

Operating Temperature	-20~70°C	Material	High-strength Aluminium-alloy
Storage Temperature	-20~80°C	Color	Gray
Relative Humidity	5%~95% at 40°C, non-condensing	VESA Mounting	VESA: 100 x 100 mm
Vibration Range	5-500 Hz, 0.026 G2/Hz, 2.16 Grms X, Y, Z, 1 hour per axis	Waterproof Rate	IP66 compliant Front Panel
External Power Supply	AC 100 - 240V~50/60Hz,1.5A	Product Dimension	400 x 250 x 62 mm, 5kg
Working Voltage	DC IN 9V~36V	Cut-out Size	386 x 236 mm
Power Consumption	≤30W	Packing Size	460 x 180 x 400 mm

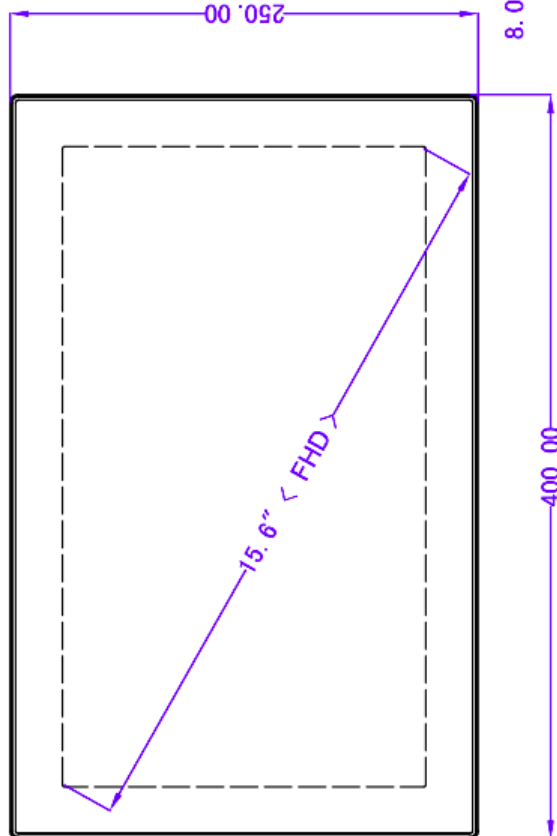
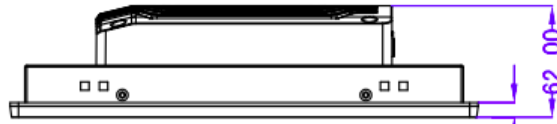
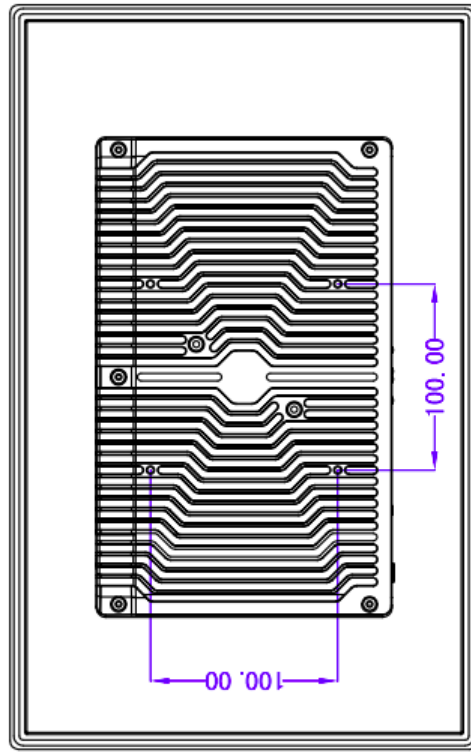
LCD Panel: (PPCI-156)

Panel Size	15.6" LED	Touch Screen Type	Multi-Touch PCAP resistive touch
Resolution	1920 x 1080	Transmittance	>90%
Aspect Ratio	16:9	Response Time	<5ms
Display Brightness	450 cd/m2 / <i>optional: 1000, 1500 cd/m2</i>	Surface Hardness	≥7H
Contrast Ratio	1000:1	Touch Life	≥ 3000W
Viewing Angle	89 / 89 / 89 / 89 (CR≥10) (L / R / U / D)		

System (10.1" – 31.5") I / O

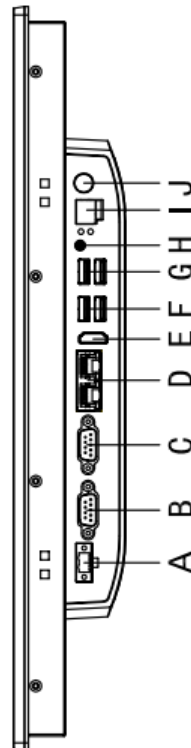
CPU	Intel i3, 8145U, 2,1-3,9 GHz, Dual-Core Intel i5, 8265U, 1,6-3,9 Ghz, Quad-Core Intel i5, 10210U, 1,6-4,2 Ghz, Quad-Core	I / O	Intel Celeron J6412, 2 GHz, Quad-Core
OS System	Windows 10/11, Linux, Unix, QNX	HDMI	1x
RAM	4 / 8 / 16 / 32 / 64 GB DDR4L, 2400Mhz	LAN	2x
Storage	64 / 128 / 240 / 480 GB / 1 TB / 2 TB	USB	3 x USB2.0 / 1 x USB3.0
Graphics	Intel HD Graphics	COM (selectable)	2 x RS-232 or 422 or 485
Network	Intel® I211-AT GbE LAN	Wireless Network	4G / WiFi / Bluetooth (Optional) <i>Intel 8265AC</i>
Audio	Realtek ACL662 Audio controller	Other I/O Interface	GPIO (on board)
TPM	TPM 2.0	SIM-Card-Slot	1x
Power	AC 230V – DC 12V 5A, 60W		

Dimensions (15,6")



I / O Definition:

- A. DC 9V~36V
- B. COM1:RS-232 / 422 / 485
- C. COM2:RS-232 / 422 / 485
- D. 2 x LAN
- E. H-DMI
- F. 1 x USB 3.0 / 1 x USB 2.0
- G. 2 x USB 3.0
- H. Audio
- I. Extension Switch
- J. Power Button



Panel Cutout Dimensions: 386 x 236 mm (15.20 x 9.29 in)